

OD 07-L

OP 07-L

Pulser for CDL Data-Logger
bi-directional and high resolution pulses



Special Features

- High resolution pulser for CDL Data-Loggers
- Very low power consumption
- Powered by logger battery
- Forward-reverse-identification

Application

The pulsers OD 07-L and OP 07-L incl. pulse plug are usable to connect an Sensus water meter to a pulse entry of a Data-Logger CDL-1U,-2U or -4U.

The OD 07-L and OP 07-L provide high resolution pulses with a corresponding flow direction signal to the CDL Data-Logger. They are therefore applicable for logging of low flow rates and their flow direction (e.g. for leakage control or reticulation network control).

Technical Data

Sensor principle:	optical sensor with reflection light barrier
Pulse validity:	K=1000 (equivalent to OP 01/02 resp.. OD 01/02)
Flow direction:	bi-directional
Operation temperature:	0 ... 50°C medium temperature 0 ... 70°C electronic housing
Storage temperature:	- 25°C ... + 75°C
Supply:	by connected CDL Data-Logger
Current consumption:	230 µA (typ.) 250 µA (max.)
Cable length:	3 m

Available Designs

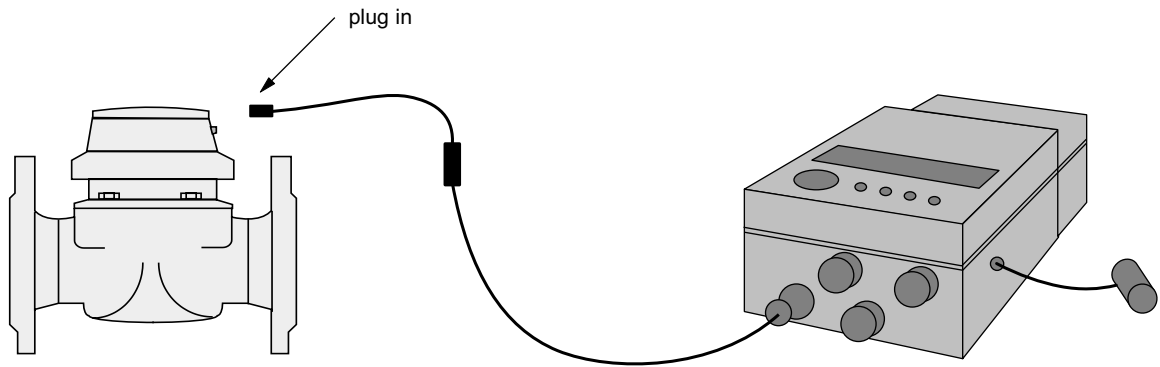
Pulser OD 07-L, incl. CDL-Pulse plug,
usable for water meters type WP-Dynamic, WS-Dynamic, WPVD and Meitwin

Pulser OP 07-L, incl. CDL-Pulse plug
usable for water meters type WP QF, WS PF, ...

www.sensus.com
info.int@sensus.com



Connection Diagram



Water Meter

Flow direction
forward / reverse
(bi-directional)

OD 07-L
OP 07-L

Data-Logger
CDL-1U, -2U, -4U