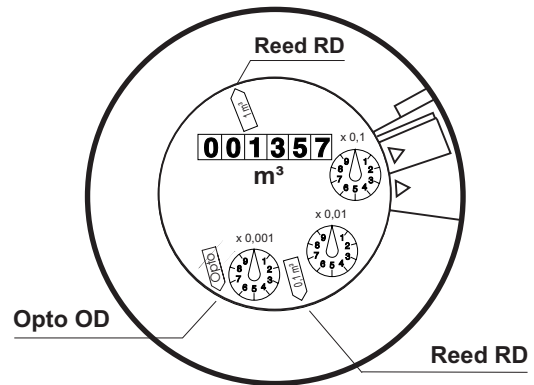
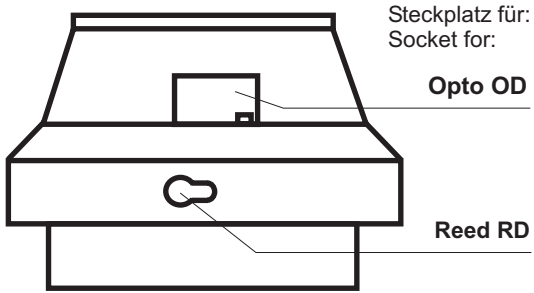
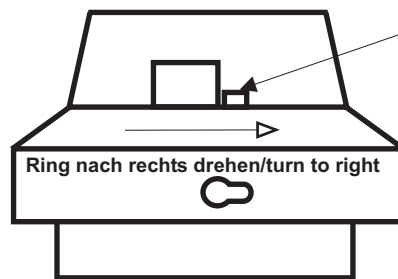


Montage von Impulsgebern Reed RD und Opto OD How to install Reed RD and Opto OD pulsers

Y 120a

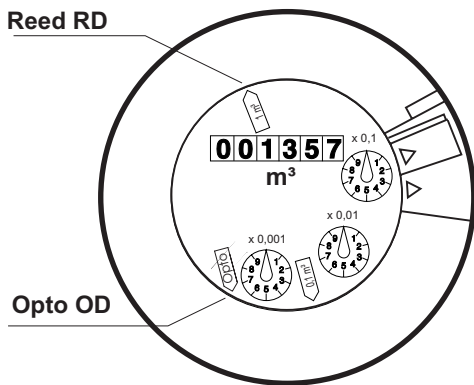


1 Kopfring festhalten
Hold head ring

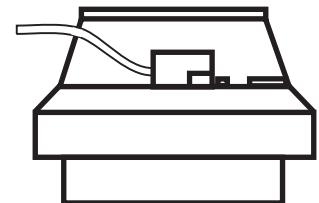
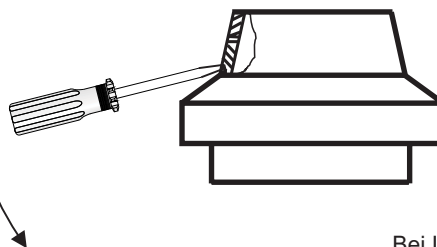


Impulsgebersteckplätze geöffnet
pulsers sockets opened

2 Reed RD



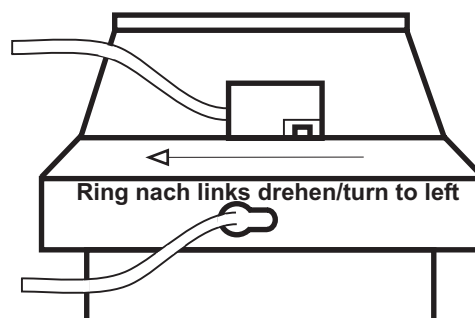
Vor Einsetzen des Opto Abdeckplatte entfernen
Before mounting the Opto remove the coverplate



2 Opto OD

Bei Installation des Opto Kabel links
Schwarzer Teil des Opto zeigt zum Zählwerk
Steg an Oberseite des Opto muß hinter den
Kopfring greifen
Install Opto head with cable to left
The black side of the Opto must face the register
The nib on the upper side of the Opto head must
be locked in behind the head ring aperture

3 Kopfring festhalten
Hold head ring



Impulsgebersteckplätze verriegelt
pulsers sockets locked