

# CDL GSM-Modem

Cellular read-out of CDL Data-Logger



## Special Features

---

- Network-independent operation
- Compatible with CDL-U Loggers
- Remote power supply possible
- Extended service time through internal switch clock
- Continuous operation with external power supply
- Compatible with CDLWin Software
- Interrogation distance extended through GSM network
- Simultaneous connection of 2 CDL-Loggers possible
- Modem does not use the CDL-Battery.
- When connected to an external power source the modem and data loggers are supplied with power
- Mobil readout via GSM modem and notebook possible

## Description

---

The CDL GSM-Modem permits wireless interrogation of the CDL Data-Logger. The modem functions in a similar fashion to a mobile telephone.

The modem is powered by a built in battery, which allows for extended operating intervals without an external power source. It can be charged by an external power source. Power can also be supplied from mains or solar panels.

The interrogation can be done automatically in intervals. Using an external power source continuous operation with permanent interrogation is possible.

An optional SMS alarm message can be sent when the data logger exceeds certain limit values.

## Application

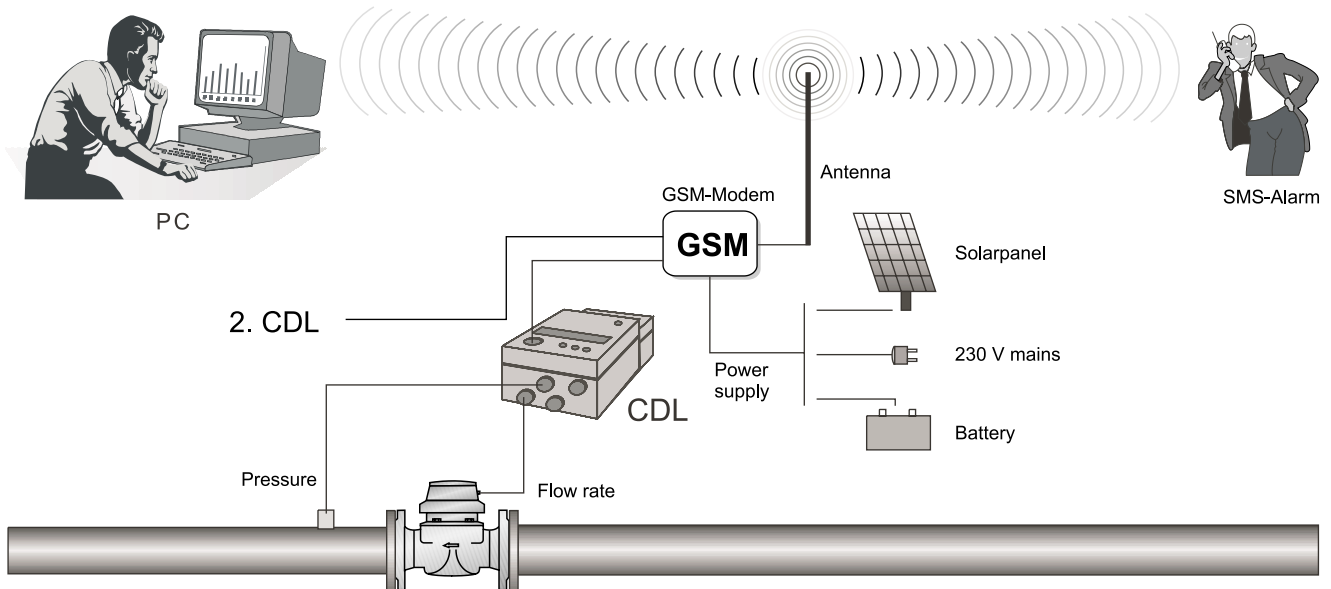
---

- Effective remote reading from CDL
- Remote monitoring
- Leakage investigation
- Remote interrogation of peak and minimum flows

---

[www.sensus.com](http://www.sensus.com)  
[info.int@sensus.com](mailto:info.int@sensus.com)





## Technical Data

### Power supply:

Internal batteries or external 12V-source (mains, solar, car batteries, generator).

Service with accumulator: typical 180h standby respectively 20h transmission time; e.g. weekly readout with 20 minutes duration of data transmission the accumulator lifetime is approx. 1 year.

Charging time with completely flat batteries: 24 hours.

The modem is powered independently of the data loggers batteries. With external supply the data logger/s is/are also supplied.

Time window for data transmission free selectable.

### Inputs:

2 x CDL External power/charger

### Outputs:

Antenna output with BNC coupling and 1m cable

### Antenna:

Magnetic foot antenna with 2 m cable

### Operating mode:

GSM, 900 MHz, depending on local provider e.g. Vodafone (SIM chip not included!)

Weight: 3.25 kg

Dimensions: 240 x 140 x 82 mm

Protection class: IP 68

### Readout period:

1 hour per day (adjustable)

Continuous operation with external power supply

Temperature: Operating: 0...50°C  
Storage: -10...60°C

## System Requirements

PC with MODEM

Software CDLWin from version 3.41, and communication module

Data-Logger CDL-1U, -2U, -4U

Compatible SIM-Card for GSM-Network

**Premise for a successful service is an adequate radio network. Please check the net quality with your local provider.**

## Order Information

CDL GSM-Modem incl. antenna, charger and connection cable

CDL-Readout extension cable (Connects CDL and CDL GSM-Modem)

SMS-programming tool

**CDL Data-Logger SIM chip for modem not included!**

## CDL GSM-Modem